

A Few things to know about the Air Techniques Provecta S pan:

ProVecta S-Pan

R



The S stands for Sharpness, and we do all this in **7 seconds!**

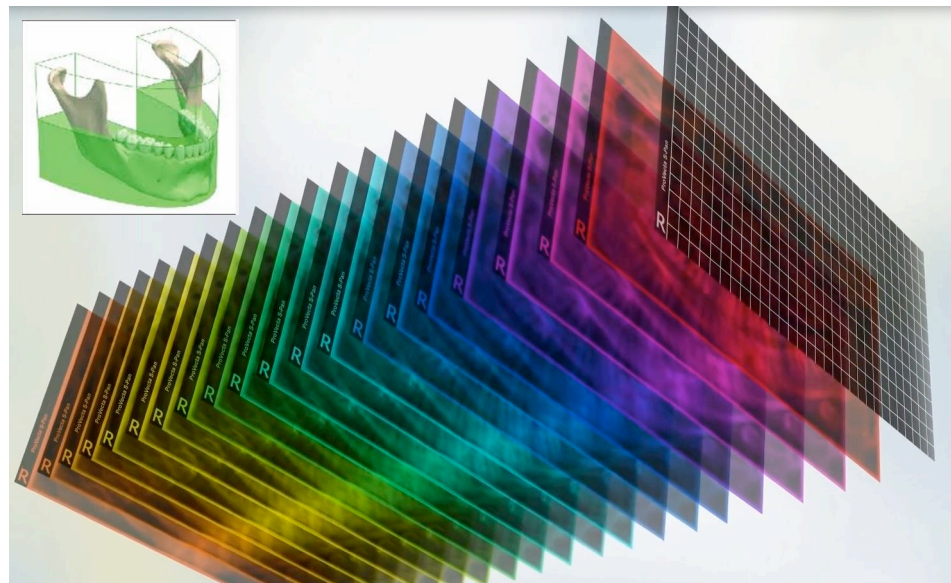
To have the best 2D pan in the dental industry, the Doctor needs to be able to see 5 things:

- the condiles
- the root tips
- inferior alveolar nerve
- mandibular bone
- coronal anatomy

We take (exclusively) 20 image layers to build our image. So, we gather more data along the focal trough (arch) than any other Pan. Our Algorithm takes the sharpest of 20,000 fragments to build the final image.

But this is only half of what S Pan does. The other half is a high-end, coated, Cmos CsI sensor. This makes it so you can see the distinct separation of enamel and dentin, in a Panoramic!

(variable robotic overhead motion-not fixed)



We can do all of this at 30 grand!

Think of your offices that have rejected the business proposition/ cost-of-ownership with intra-oral sensors.

How can we leverage phosphor plate machines, or perhaps a camera?

I can get creative with promos!

MOST IMPORTANT- If you allow the Doctor to see the 5 things at the top of the screen, and you add in a creative deal, you'll be telling the right story!

